



*Snow***STRIKER™**



OWNER'S MANUAL

SNOWSTRIKER™ SFT FLEX – EXPANDABLE BOX PLOW FOR TRACTORS
AND LOADERS

Table of contents

GENERAL INFORMATION	3
Technical specifications.....	4
Center of gravity.....	4
SAFETY	3
Safety instructions.....	4
Warning and caution labels.....	5
INSTALLATION & OPERATION	5
Spring mechanism adjustment and maintenance.....	5
Maintenance.....	6
Greasing points.....	7
MECHANICS GUIDE	8
Hydraulic schematic.....	8
Wiring schematic.....	10
WARRANTY INFORMATION	11
DECLARATION OF CONFORMITY	12

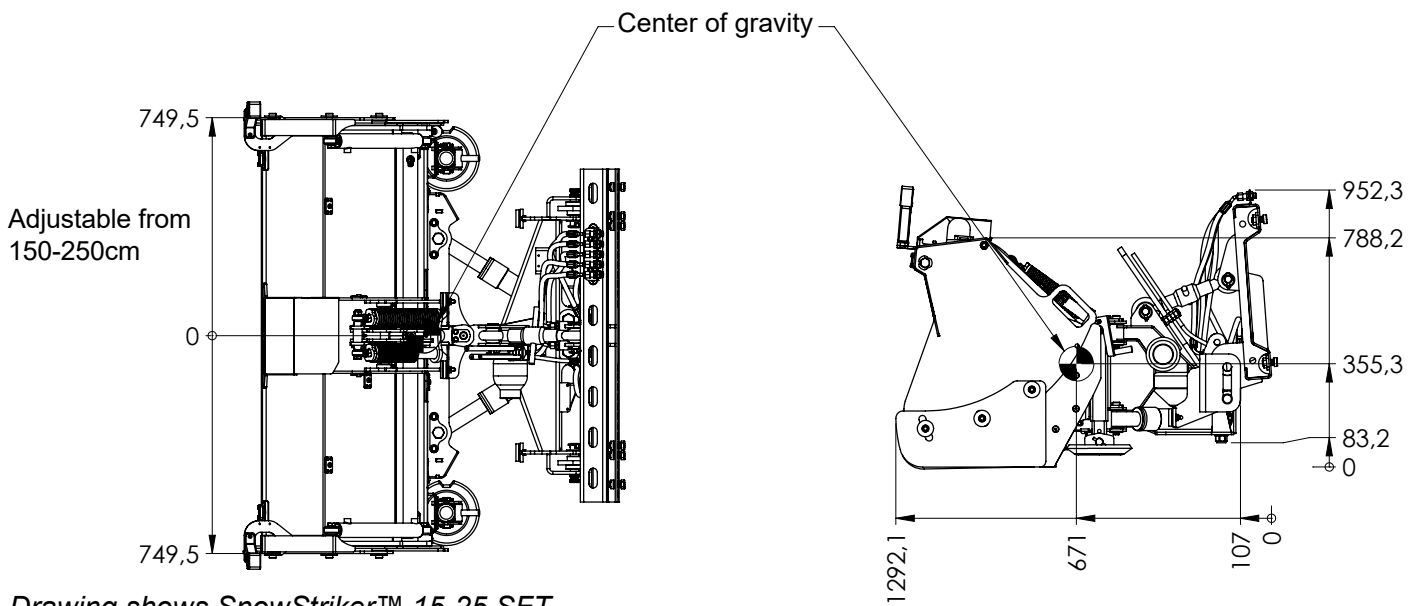


CAUTION - Read this manual before installing or operating the snowplow

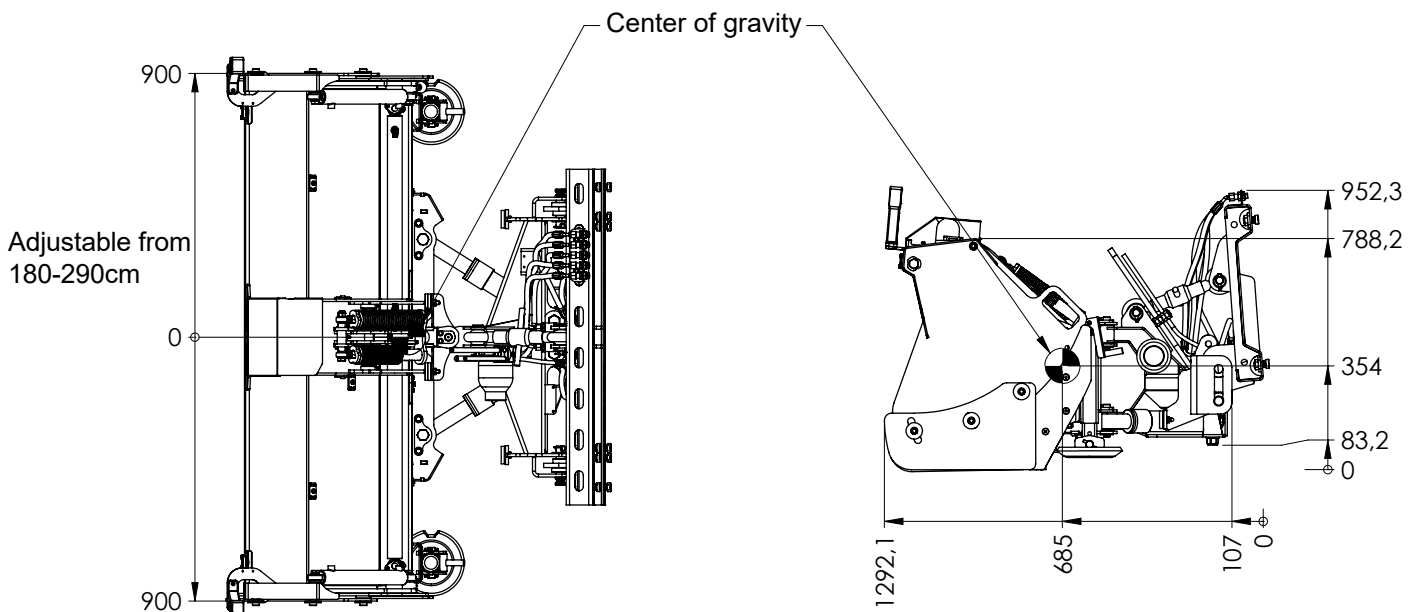
Technical specifications

MODEL	13-21 SFT	15-25 SFT	18-29 SFT
Width	130-210 cm	150-250 cm	180-290 cm
Width (fully angled)	105-185cm	125-225 cm	155-265 cm
Height	65 cm	80 cm	80 cm
Weight	310 kg	380 kg	490 kg
Vehicle	1-3 ton tractors/loaders	2-4 ton tractors/loaders	2,5-4 ton tractors/loaders

Center of gravity



Drawing shows SnowStriker™ 15-25 SFT



Drawing shows SnowStriker™ 18-29 SFT

Safety instructions

Incorrect installation and operation can lead to serious personal injury and/or damage your equipment and property. Note and ensure that you understand this manual and all the labels before installing, operating or making adjustments to the snowplow.

! WARNING
 Observe these safety precautions before, during and after operating the snowplow. You can prevent injury to persons and damage to the plow by following these precautions.

! WARNING
Before operating snowplow:

- Read this manual before operating the snowplow.
- Make sure that your vehicle total weight is not exceeded beyond payload limits.
- Inspect hydraulic components and hoses
- Check the snowplow and its components for cracks and defects before every plowing session
- Replace any damaged or worn parts, a snowplow in need of repairs or maintenance should not be operated.
- Make sure the equipment is securely and correctly mounted.

! WARNING
Maintenance of the snowplow:

- Use a piece of cardboard or wood to detect a suspected hose leak. Do NOT use your hand to locate it, hydraulic fluid can damage your skin.

! WARNING
 While operating snowplow:

- Make sure that bystanders keep a safe distance (3 m) when the blade is being operated, raised, lowered or angled. Don't stand between vehicle and blade, a moving or falling blade can cause personal injury.
- Transport speed should not exceed 70 km/h
- Plowing speed should not exceed 40 km/h

! WARNING
After operating snowplow:

- Lower the plow when vehicle is parked. The hydraulic pressure can change if temperature changes, causing an unexpected plow drop which can lead to plow damage or personal injury.

Personal safety

- To prevent accidents, secure long hair and do not wear jewelry or necktie, only wear tight-fitting clothes while working on your plow or vehicle.
- Protect your eyes with safety goggles to avoid damage from battery acid, gasoline, dirt and dust.

Warning and caution labels

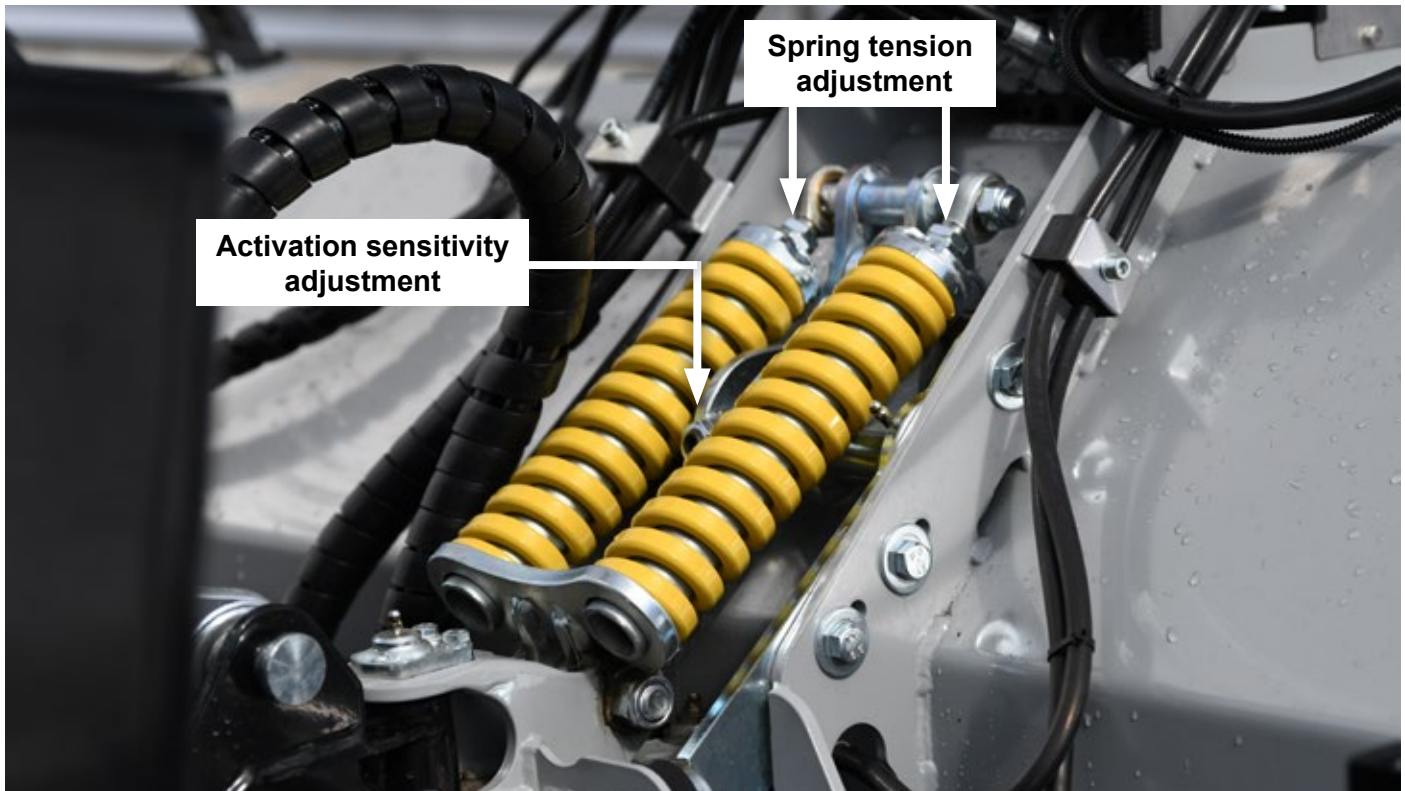
Please become familiar with these warning and caution labels on the plow.



Spring Mechanism Adjustment and Maintenance

Spring mechanisms must be checked, cleaned, and serviced regularly to ensure they work properly. The activation / rebound sensitivity of the spring mechanism can be adjusted using the activation-sensitivity adjustment bolt and by adjusting the spring tension.

- If the spring mechanism activates too easily, turn the adjustment bolt counterclockwise to reduce sensitivity.
- If the spring mechanism does not return to its original position, tighten the springs to increase the spring tension.



Maintenance

Follow this checklist to keep your snowplow in good condition and to be able to maintain full warranty for possible damages.

Before-use maintenance checklist

- Ensure the equipment is properly locked and secured
- Check the hydraulic oil level
- Perform a visual inspection for oil leaks
- Inspect all accessory components for cracks, deformation, or other abnormalities

Periodical maintenance checklist

- Check that fasteners are tight enough
- Check for scratches and exposed metal, clean and apply touch-up paint
- Clean and apply dielectric grease on all electrical plugs and connectors
- Lubricate all pins, bushings and grease fittings
- Inspect hydraulic components, hoses and cylinders, check for leaks and wear
- Inspect rod ends for corrosion and pitting
- Check cutting edges for wear

Yearly maintenance checklist

- Pressure wash and dry the plow carefully before putting it in storage
- Lubricate all exposed cylinder rod ends with liquid white lithium grease to prevent corrosion
- Cover the snowplow with a tarp during storage, to protect it from sun fading and other weather conditions and circumstances

Greasing points

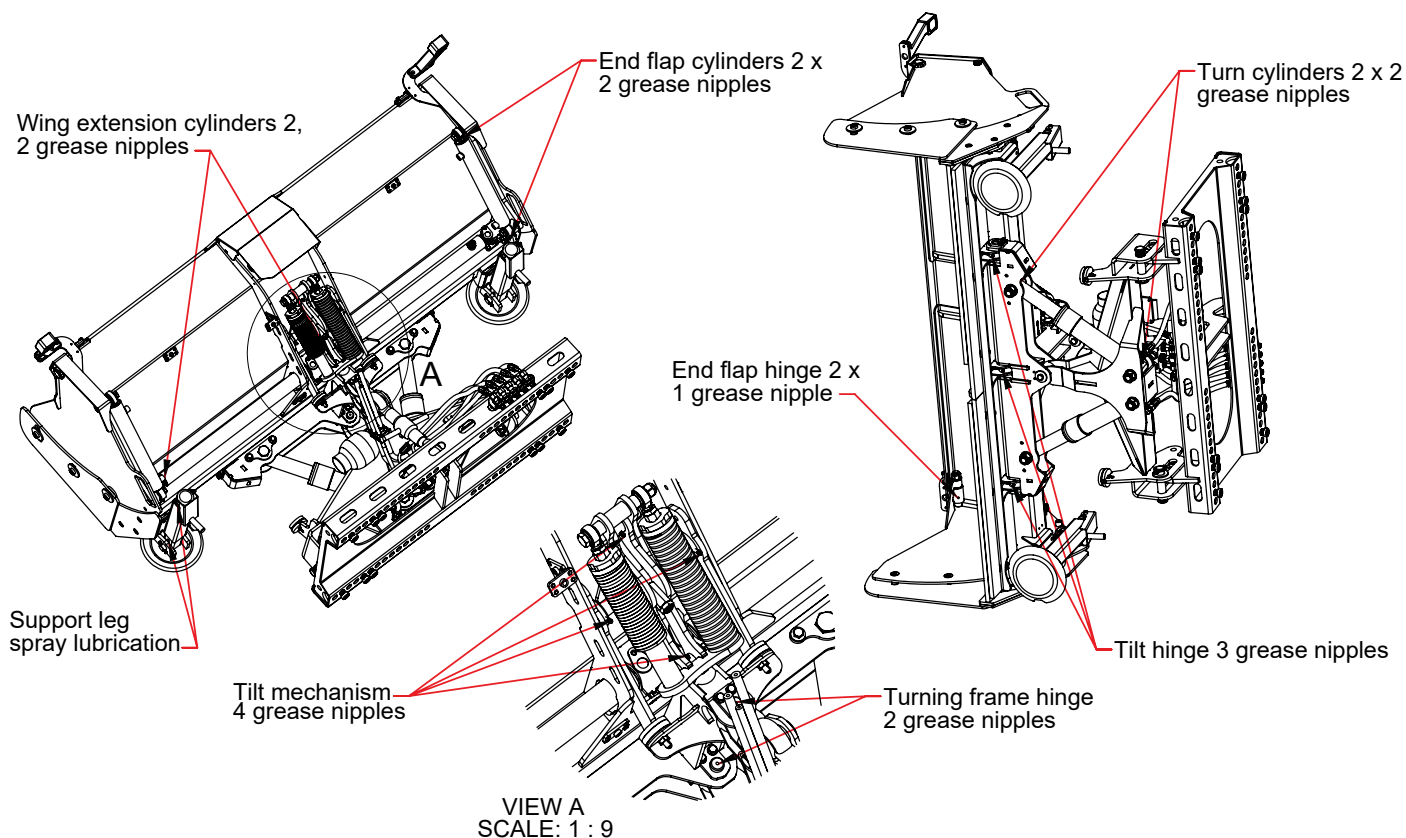
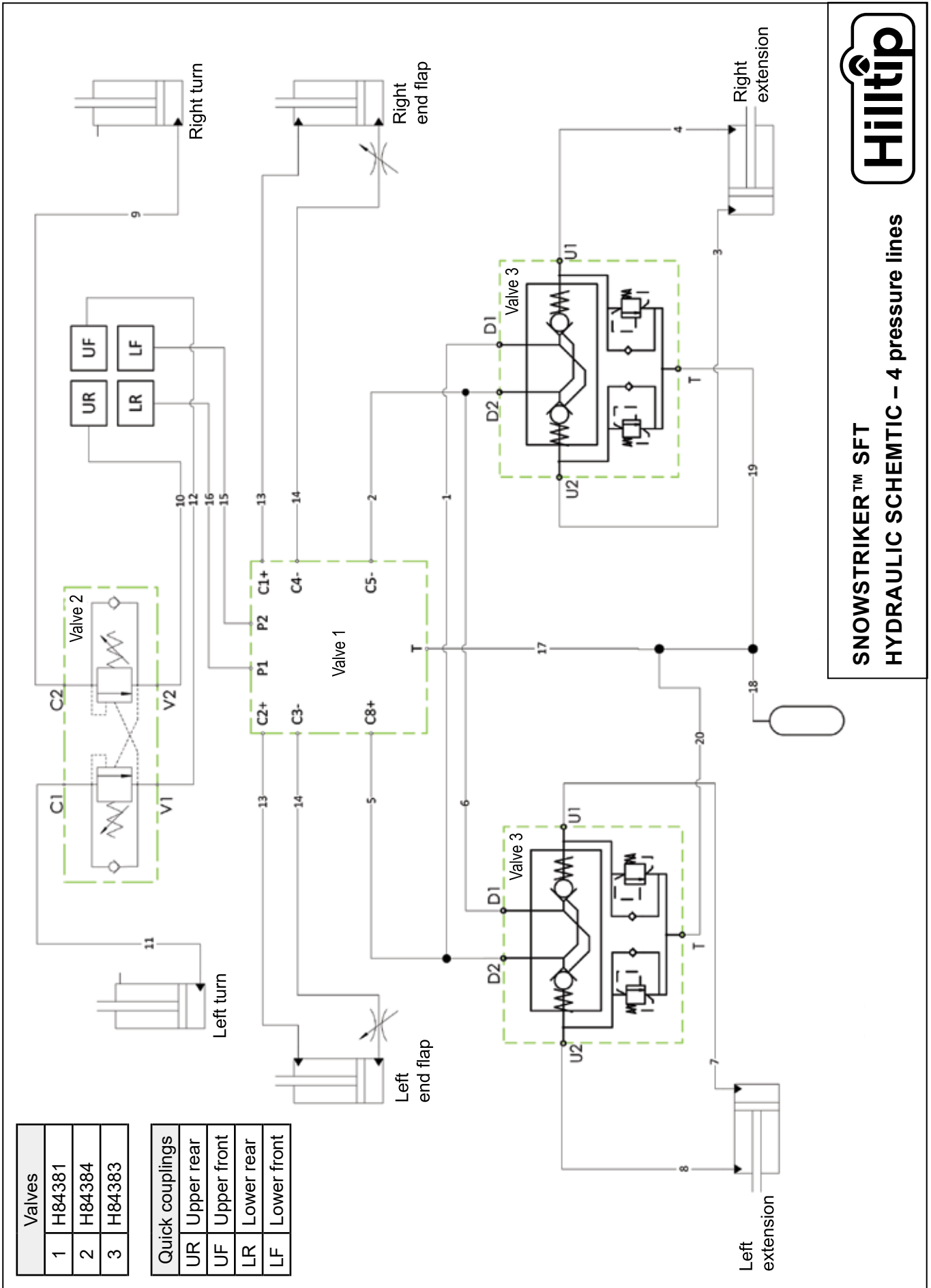
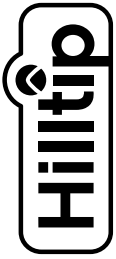
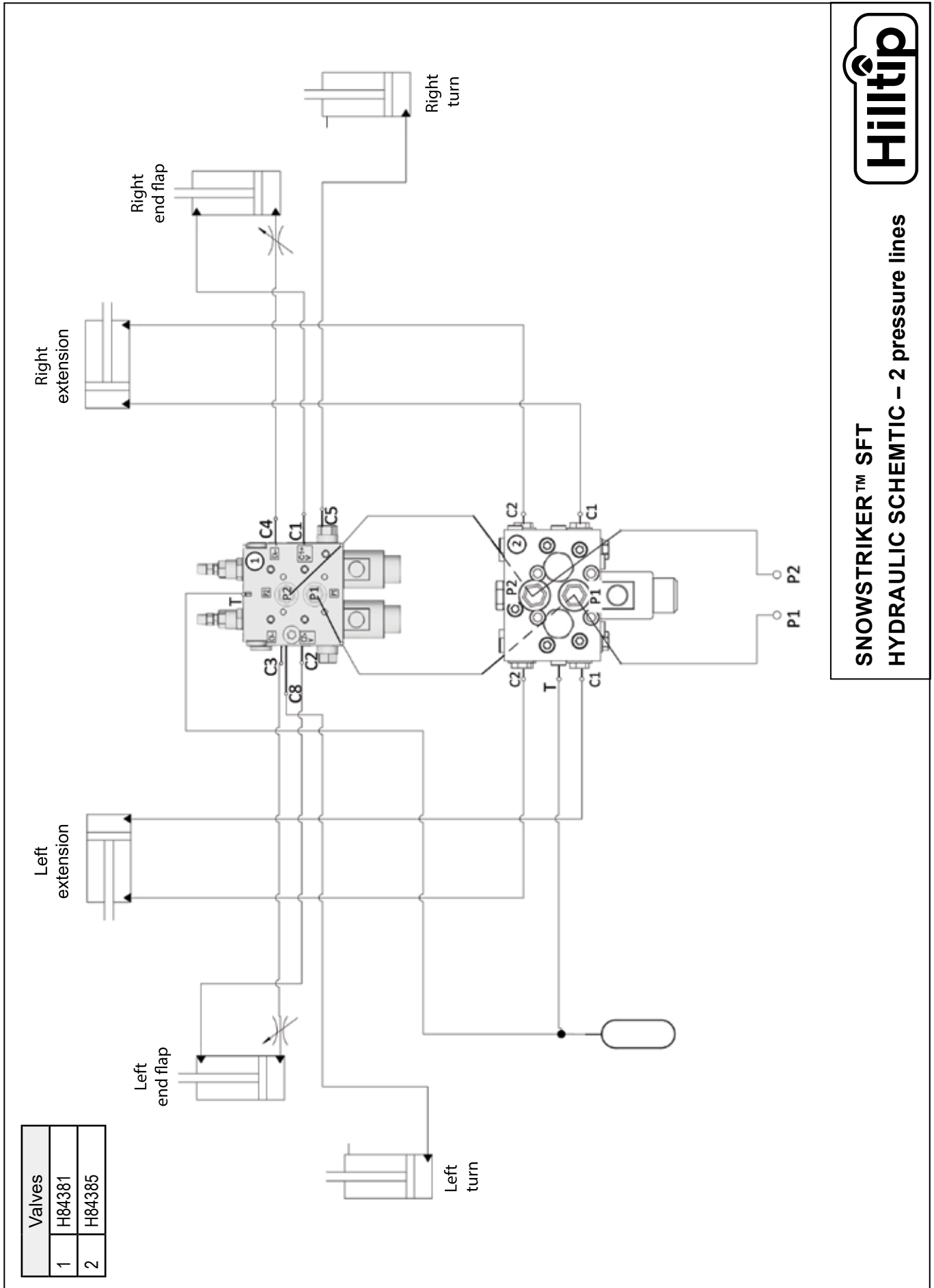


Image shows SnowStriker™ 18-29 SFT

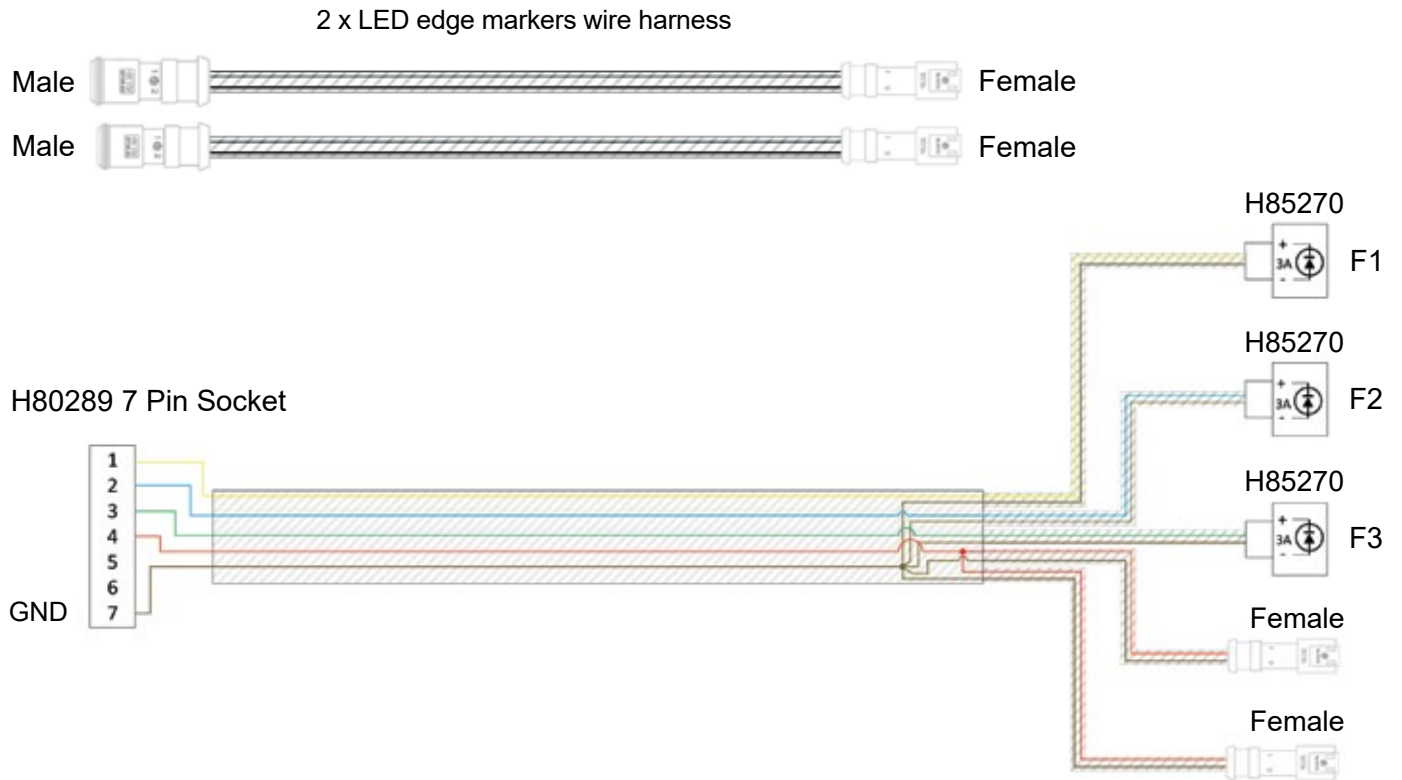


**SNOWSTRIKER™ SFT
HYDRAULIC SCHEMATIC – 4 pressure lines**



**SNOWSTRIKER™ SFT
HYDRAULIC SCHEMATIC – 2 pressure lines**

Wiring schematic



H80289
7 Pin Socket



H85270
DIN valve connector

Functions	
F1	Plow extension
F2	Right end flap
F3	Left end flap
0V	Turning

Warranty information

This warranty replaces all previous warranties

Warranty

Thank you for your interest in the products and services of Oy Hilltip Ab. This Limited Warranty applies to snowplows, spreaders, sweepers and other products and parts (from now on referred to as the "Product") purchased from Hilltip or an authorized dealer.

What does this limited warranty cover?

This Limited Warranty covers any defects in material or workmanship under normal use during the Warranty Period.

During the Warranty Period, Hilltip, or an authorized dealer will repair or replace, at no charge, products or parts of a product that proves defective because of improper material or workmanship, under normal use and maintenance.

How long does the coverage last?

The Warranty Period for the product purchased from Hilltip, or an authorized dealer is two (2) years from the date of purchase. The warranty period for a replacement part is one (1) year from the date of replacement or repair.

How to obtain warranty on your product?

Make sure your dealer has registered your product. In order to obtain service under this warranty the product must be registered with the end user's contact details (name, address, e-mail address and phone number).

What does this limited warranty not cover?

- Improperly installed parts.
- Damage caused by usage that is not in accordance with product instructions.
- Modification of the product, and/or the vehicle, is entirely at the purchaser's risk.
- This warranty does not include compensation for the drive to the service spot.
- Any damage in transit will be the responsibility of the carrier or at the risk of the purchaser.
- Hilltip will not provide replacement equipment or cover rental costs while your equipment is out of service.

This Limited Warranty does not cover any problem that is caused by:

- Misuse, neglect, accident, improper installation, maintenance or storage, or repair or alternation by anyone except Hilltip or an authorized dealer.

What do you have to do?

To obtain warranty service, you must first contact us or your authorized dealer. The purchaser must notify Hilltip or an authorized dealer within ten (10) days after any defect in the product becomes known during the warranty period.

What will we do to correct problems?

Hilltip, or an authorized dealer will repair or replace the part at no charge using either new or refurbished replacement parts.



DECLARATION OF CONFORMITY

Manufacturer's & Assambler's Name: **Oy Hilltip Ab**

Manufacturer's & Assambler's Address: **Pukkisaarentie 6, FIN-68600 Pietarsaari, Finland**

Equipment Description: Hilltip Snowplow Applications

Equipment Model Designation: Hilltip SnowStriker™ 13-21 SFT, 15-25 SFT and 18-29 SFT

Equipment applications: Tractors & Loaders

The equipments specified above are manufactured, where applicable, in conformity with provisions of the normative document according to the following directives and standards, in addition to relevant Road Traffic Regulations in European countries:

- 2006/42/EC
- EN 15432-1
- 2009/433/EG
- ECE R10

I, the undersigned, hereby declare that the equipments specified above, that have been assambled by Oy Hilltip Ab, conforms to the above directives and standards

Pietarsaari, 13 August 2025

Signature:

Printed Name: Tom Mäenpää

Title: CEO

Installer's Name:

Installer's Address:

Type:

Serial number:

Year of installation:

I, the undersigned, hereby declare that the equipment installation to the vehicle specified above conforms to the directive 2006/42/EC and relevant Road Traffic Regulations.

DATE:

Signature:

Printed:

Title:



Oy Hilltip Ab
Pukkisaarentie 6
68600 Pietarsaari
Finland

www.hilltip.com
info@hilltip.com