



Snow **STRIKER™**



OWNER'S MANUAL

STRAIGHT-BLADE & V-PLOW FOR 5-8 TON TRACTORS

This manual replaces all editions with an earlier date.

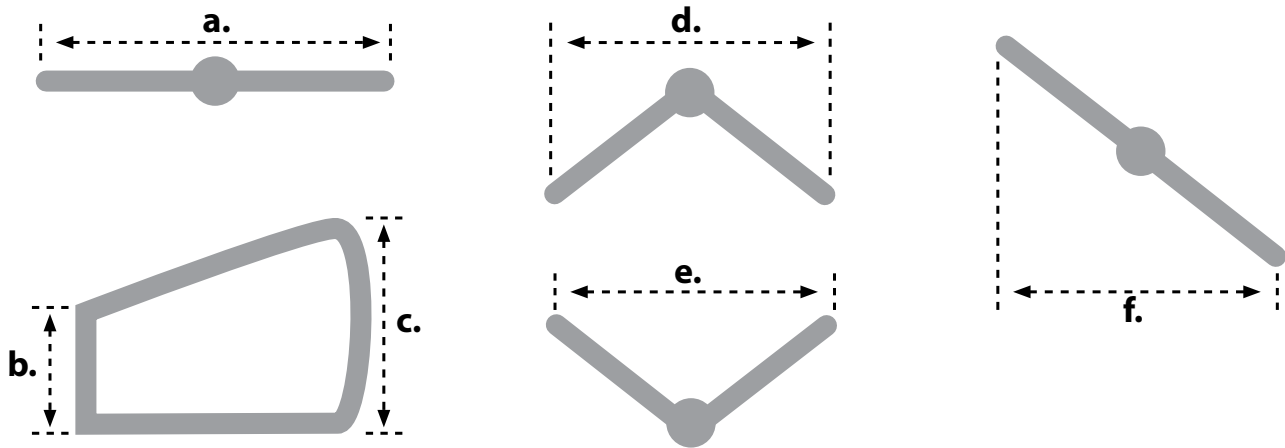
Table of contents

TECHNICAL SPECIFICATIONS.....	3
Specifications.....	3
Center of gravity.....	4
SAFETY.....	5
Safety instructions.....	5
Warning and caution labels.....	5
MAINTENANCE.....	6
Periodical and yearly maintenance checklist.....	5
Grease fittings.....	6
MECHANICS GUIDE.....	7
Hydraulic schematics.....	7
Snowplow valve electrical functions.....	8
Electrical schematics.....	8
WARRANTY INFORMATION.....	10
CE DECLARATION OF CONFORMITY.....	11



CAUTION - Read this manual before installing or operating the snowplow

Technical specifications

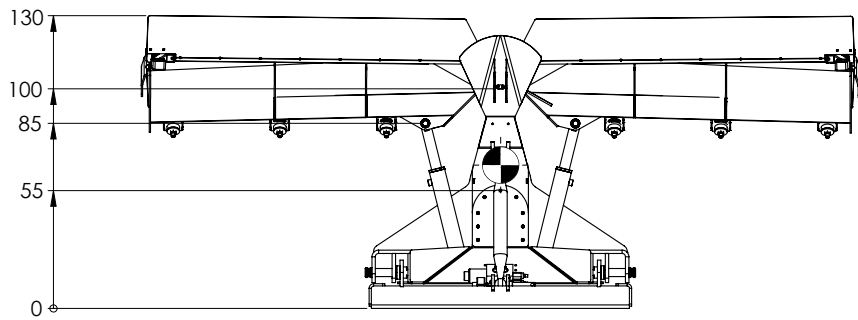
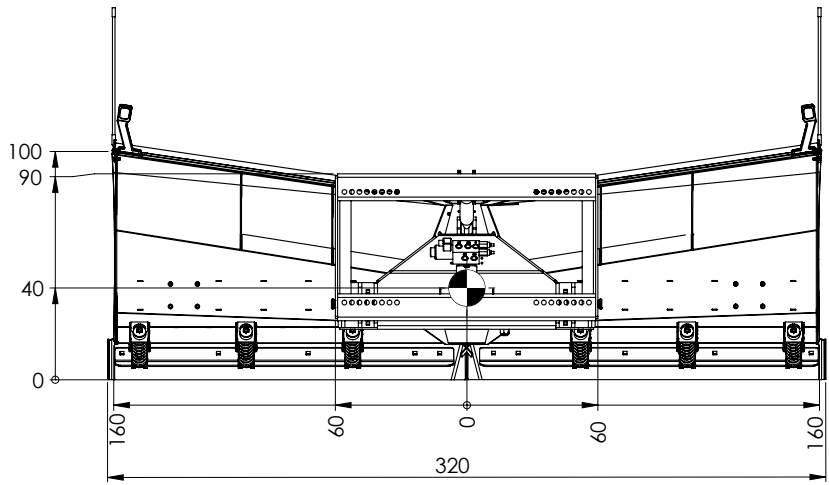
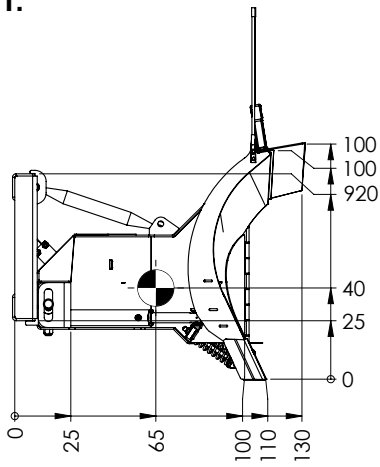


STRAIGHT-BLADE	2600 SMT	2750 SMT	3000 SMT
Width (a.)	260 cm	275 cm	300 cm
Height (b. & c.)	75 cm	75 cm	75 cm
Width, windrow position (f.)	225 cm	240 cm	260 cm
Weight	380 kg	395 kg	412 kg
Trip springs	6	6	6
V-PLOW	2600 VMT	2900 VMT	3200 VMT
Width (a.)	260 cm	290 cm	320 cm
Height, center (b.)	80 cm	80 cm	80 cm
Height, outer edge (c.)	100 cm	100 cm	100 cm
Width, v-position (d.)	225 cm	250 cm	275cm
Width, scoop position (e.)	225 cm	250 cm	275 cm
Width, windrow position (f.)	225 cm	250 cm	275 cm
Weight	560 kg	580 kg	600 kg
Trip springs	6	6	6

Specifications and other details are subject to change without notice.

Center of gravity

VMT:



Safety instructions

Incorrect installation and operation can lead to serious personal injury and/or damage your equipment and property. Note and ensure that you understand this manual and all the labels before installing, operating or making adjustments to the snowplow.

! WARNING

Observe these safety precautions before, during and after operating the snowplow. You can prevent injury to persons and damage to the plow by following these precautions.

! WARNING

Before operating snowplow:

- Read this manual before operating the snowplow.
- Make sure that your vehicle total weight is not exceeded beyond payload limits.
- Inspect hydraulic components and hoses.
- Check the snowplow and its components for cracks and defects before every plowing-session.
- Replace any damaged or worn parts, a snowplow in need of repairs or maintenance should not be operated.
- Make sure the equipment is securely and correctly mounted.

! WARNING

Maintenance of the snowplow:

- Use a piece of cardboard or wood to detect a suspected hose leak. Do NOT use your hand to locate it, hydraulic fluid can damage your skin.

See page 6 for maintenance checklist

Personal safety

- To prevent accidents, secure long hair and do not wear jewelry or necktie, only wear tight-fitting clothes while working on your plow or vehicle.
- Protect your eyes with safety goggles to avoid damage from battery acid, gasoline, dirt and dust.

! WARNING

While operating snowplow:

- Make sure that bystanders keep a safe distance (3 m) when the blade is being operated, raised, lowered or angled. Don't stand between vehicle and blade, a moving or falling blade can cause personal injury.
- Transport speed should not exceed 70km/h
- Plowing speed should not exceed 40 km/h

! WARNING

After operating snowplow:

- Lower the plow when vehicle is parked. The hydraulic pressure can change if
- temperature changes, causing an unexpected plow drop which can lead to plow damage or personal injury.

Warning and caution labels

Please become familiar with these warning and caution labels on the plow.



Maintenance

Follow this checklist to keep your snowplow in good condition and to be able to maintain full warranty for possible damages.

Periodical maintenance checklist:

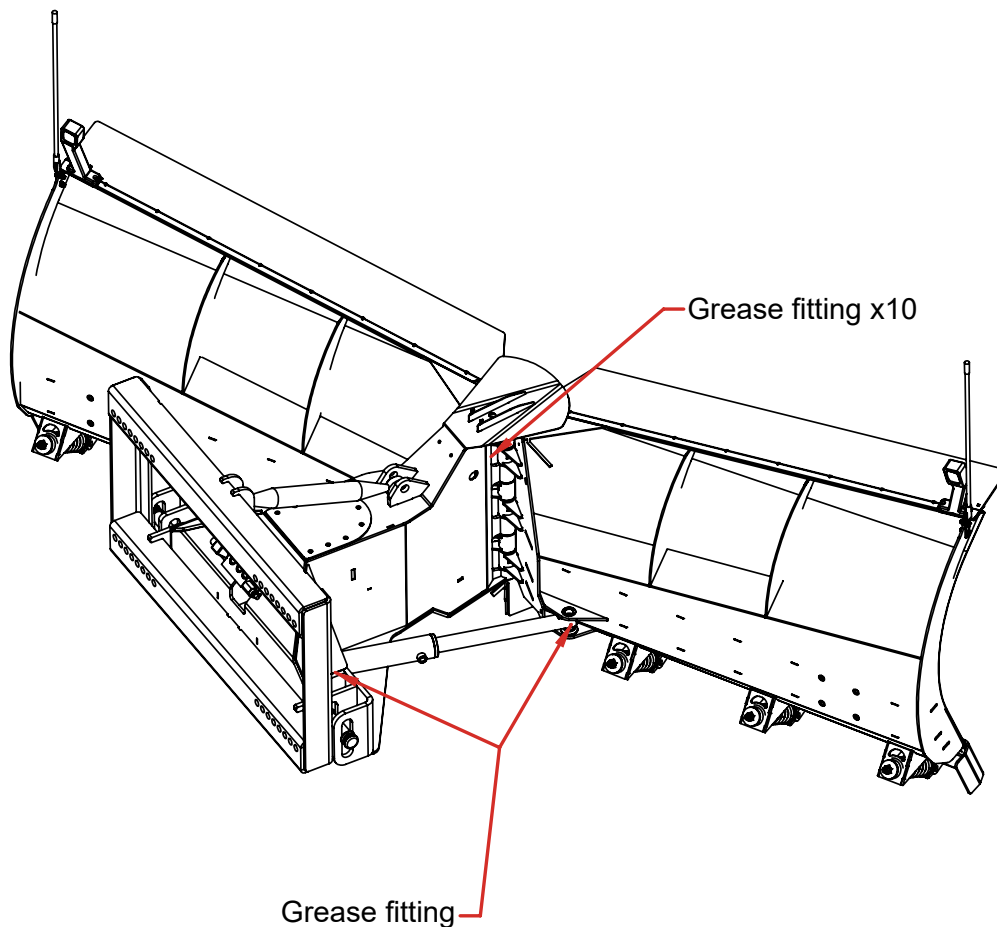
- Check that fasteners are tight enough.
- Check for scratches and exposed metal, clean and apply touch-up paint.
- Clean and apply dielectric grease on all electrical plugs and connectors.
- Lubricate all pins, bushings and grease fittings.
- Inspect hydraulic components, hoses and cylinders, check for leaks and wear.
- Inspect rod ends for corrosion and pitting.
- Check cutting edges for wear.

Yearly maintenance checklist:

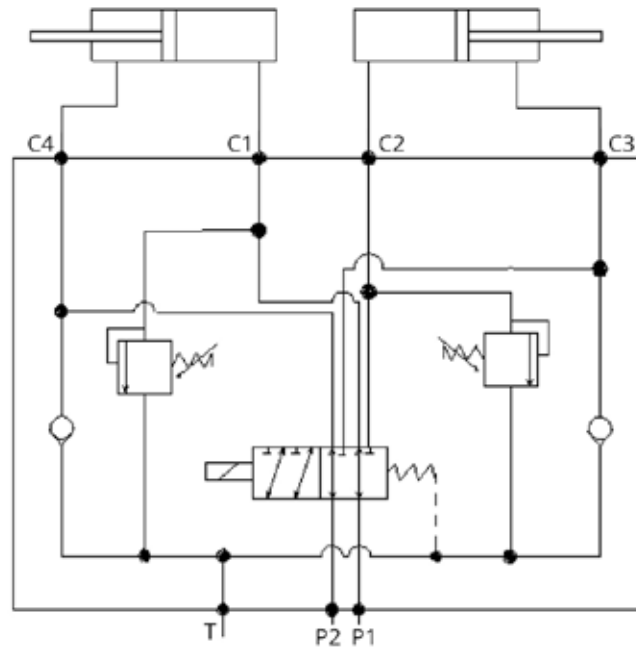
- Pressure wash and dry the plow carefully before putting it in storage.
- Check for scratches and exposed metal, clean and apply touch-up paint.
- Clean and apply dielectric grease on all electrical plugs and connectors.
- Lubricate all pins, bushings and grease fittings.
- Lubricate all exposed cylinder rod ends with liquid white lithium grease to prevent corrosion.
- Cover the snowplow with a tarp during storage, to protect it from sun fading, other weather conditions, and circumstances.

Grease fittings

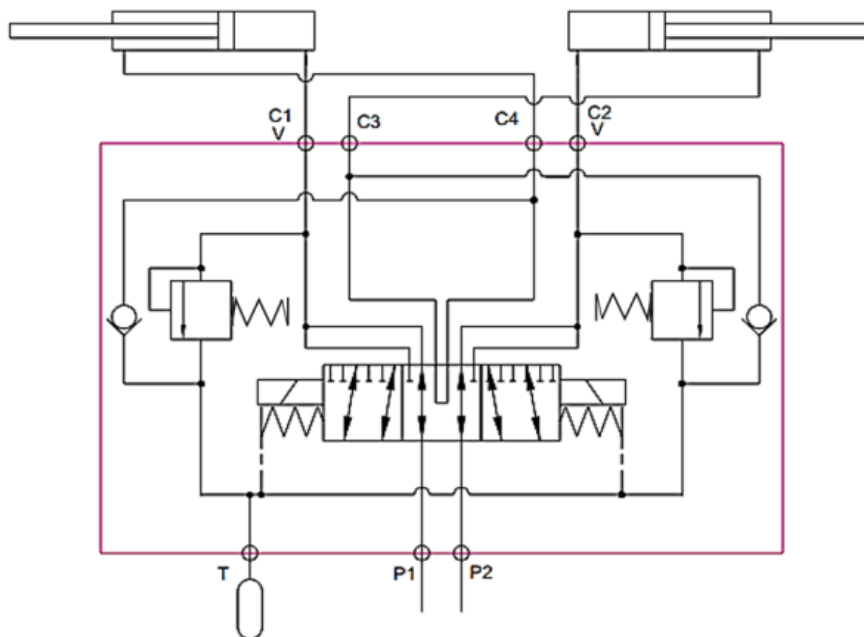
VMT:



Hydraulic schematic VMT (standard)



Hydraulic schematic VMT, electrical valve 6/3 (optional)



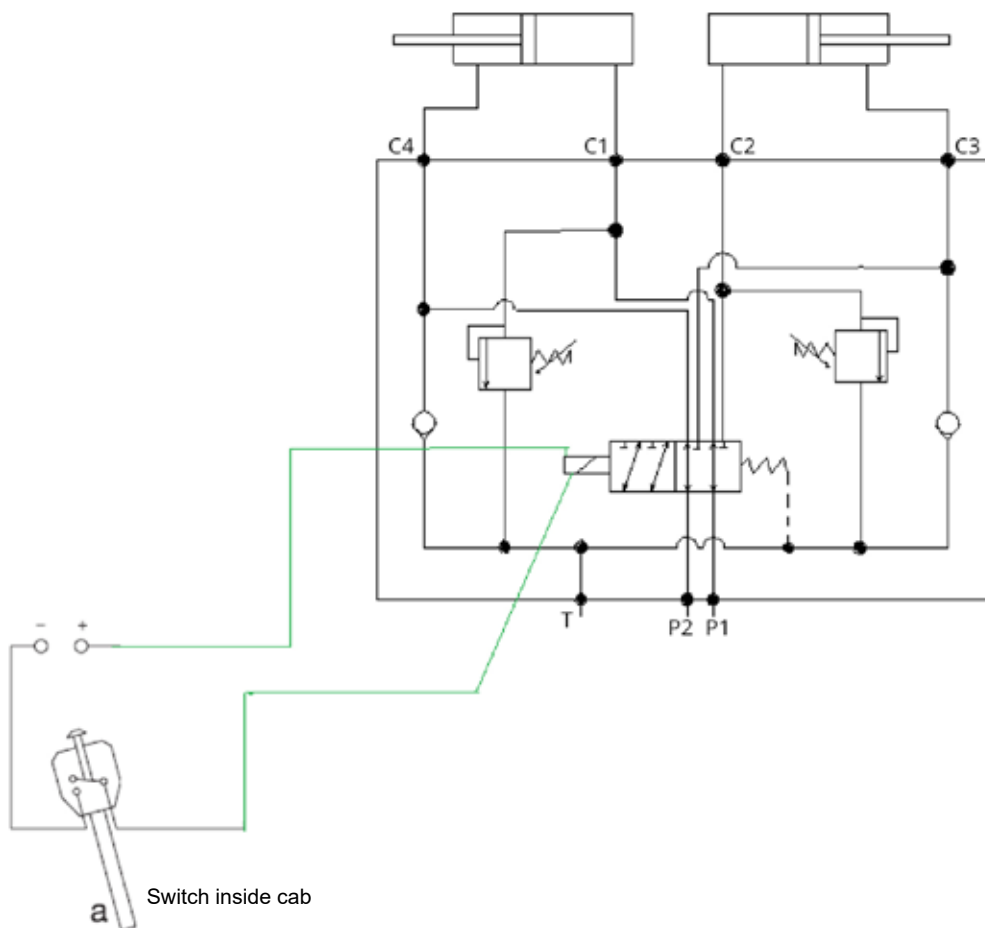
Snowplow valve electrical functions

Pin #	
1	+12/24V LED edge markers
2	+12/24V Valve coil 1
3	
7	GND

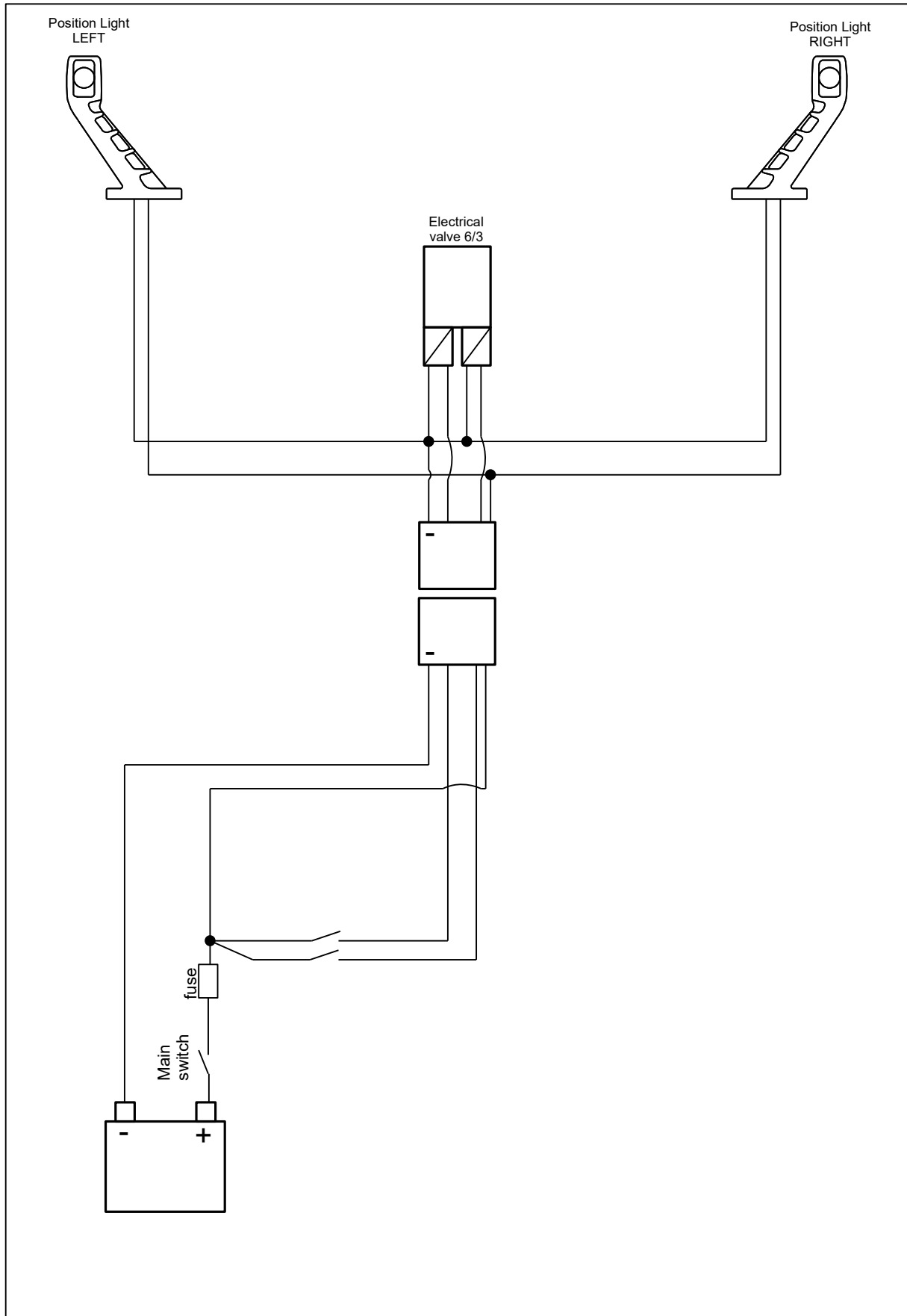
Hako connector

Pin #	
58L	LED edge marker left
58R	LED edge marker right
54	Terminal X, operated via switch in the roof console
31	GND

Electrical schematic (standard)



Electrical schematic, electrical valve 6/3 (optional)



Warranty information

This warranty replaces all previous warranties

Warranty

Thank you for your interest in the products and services of Oy Hilltip Ab. This Limited Warranty applies to SnowStriker™ snowplows and other products and parts (from now on referred to as the "Product") purchased from Hilltip or an authorized dealer.

What does this limited warranty cover?

This Limited Warranty covers any defects in material or workmanship under normal use during the Warranty Period.

During the Warranty Period, Hilltip, or an authorized dealer will repair or replace, at no charge, products or parts of a product that proves defective because of improper material or workmanship, under normal use and maintenance.

How long does the coverage last?

The Warranty Period for the product purchased from Hilltip, or an authorized dealer is two (2) years from the date of purchase. The warranty period for a replacement part is one (1) year from the date of replacement or repair.

How to obtain warranty on your product?

Make sure your dealer has registered your product. In order to obtain service under this warranty the product must be registered with the end user's contact details (name, address, e-mail address and phone number).

What does this limited warranty not cover?

- Improperly installed parts.
- Damage caused by usage that is not in accordance with product instructions.
- Modification of the product, and/or the vehicle, is entirely at the purchaser's risk.
- This warranty does not include compensation for the drive to the service spot.
- Any damage in transit will be the responsibility of the carrier or at the risk of the purchaser.
- Hilltip will not provide replacement equipment or cover rental costs while your equipment is out of service.

This Limited Warranty does not cover any problem that is caused by:

- Misuse, neglect, accident, improper installation, maintenance or storage, or repair or alternation by anyone except Hilltip or an authorized dealer.

What do you have to do?

To obtain warranty service, you must first contact us or your authorized dealer. The purchaser must notify Hilltip or an authorized dealer within ten (10) days after any defect in the product becomes known during the warranty period.

What will we do to correct problems?

Hilltip, or an authorized dealer will repair or replace the part at no charge using either new or refurbished replacement parts.



DECLARATION OF CONFORMITY

Manufacturer's & Assambler's Name: **Oy Hilltip Ab**

Manufacturer's & Assambler's Address: **Pukkisaarentie 6, FIN-68600 Pietarsaari, Finland**

Equipment Description: Hilltip Snowplow Applications

Equipment Model Designation: Hilltip SnowStriker™ 2600 SMT, 2750 SMT, 3000 SMT, 2600 VMT, 2900 VMT, and 3200 VMT

Equipment applications: Tractors and loaders (5-8 ton)

The equipments specified above are manufactured, where applicable, in conformity with provisions of the normative document according to the following directives and standards, in addition to relevant Road Traffic Regulations in European countries:

- 2006/42/EC
- EN 15432-1
- 2009/433/EG
- ECE R10

I, the undersigned, hereby declare that the equipments specified above, that have been assambled by Oy Hilltip Ab, conforms to the above directives and standards

Pietarsaari, September 9, 2024

Signature:

Printed Name: Tom Mäenpää

Title: CEO

Installer's Name:

Installer's Address:

Type:

Serial number:

Year of installation:

I, the undersigned, hereby declare that the equipment installation to the vehicle specified above conforms to the directive 2006/42/EC and relevant Road Traffic Regulations.

DATE:

Signature:

Printed:

Title:



Oy Hilltip Ab
Pukkisaarentie 6
FIN-68600 Pietarsaari
Finland

www.hilltip.com
info@hilltip.com